

1940

2012

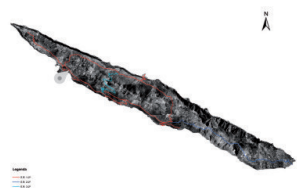
PASSADO... PRESENTE...

ILHA DE SÃO JORGE

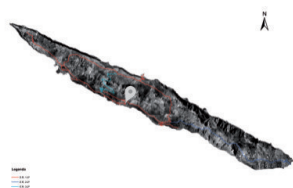








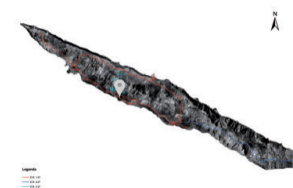
E.R.-1-2ª- Levadas



E.R.-1-2ª- Manadas



E.R.-1-2ª- Manadas



E.R.-1-2ª- Terreiros



Centro de E.R.-1-2º- Norte Grande



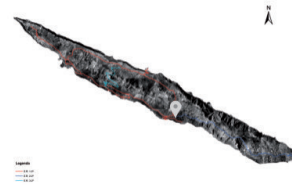




E.R.-1-2ª- Ribeira D'Areia



E.R.-1-2ª- Relvinha



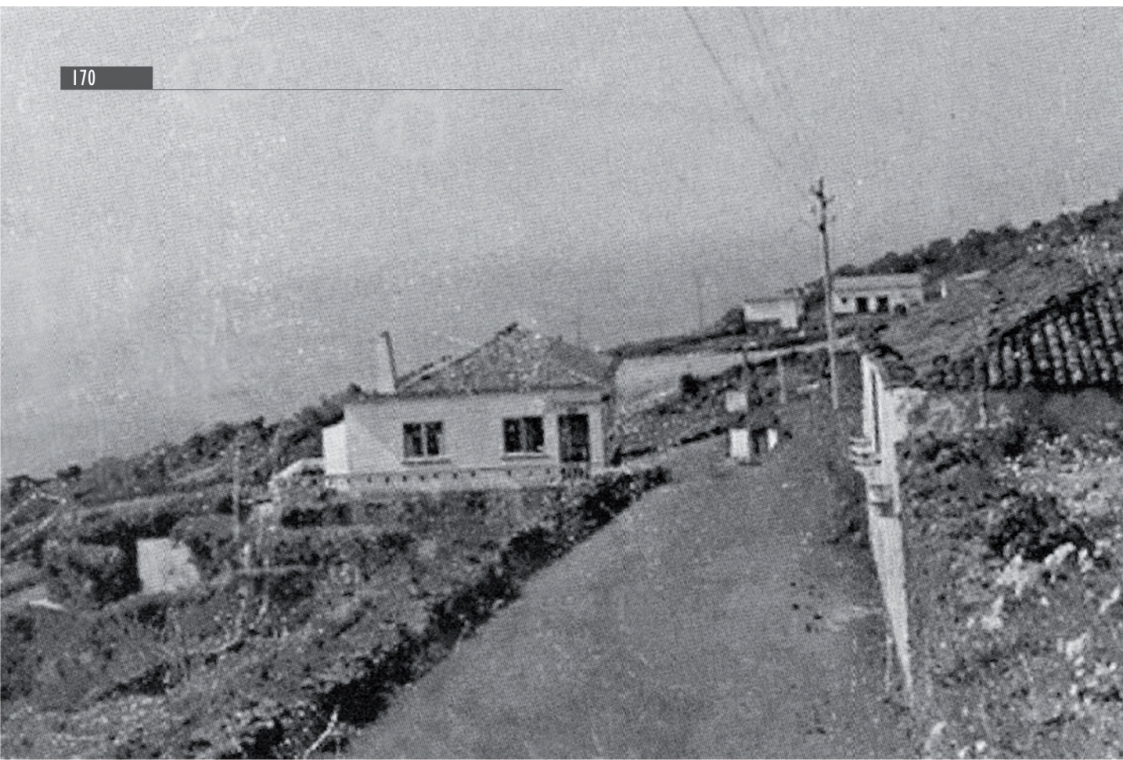
E.R.-1-2ª- Rua de Baixo

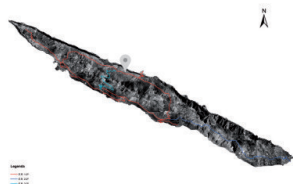


E.R.-1-2ª-Rosais









E.R.-1-2º-Santo António

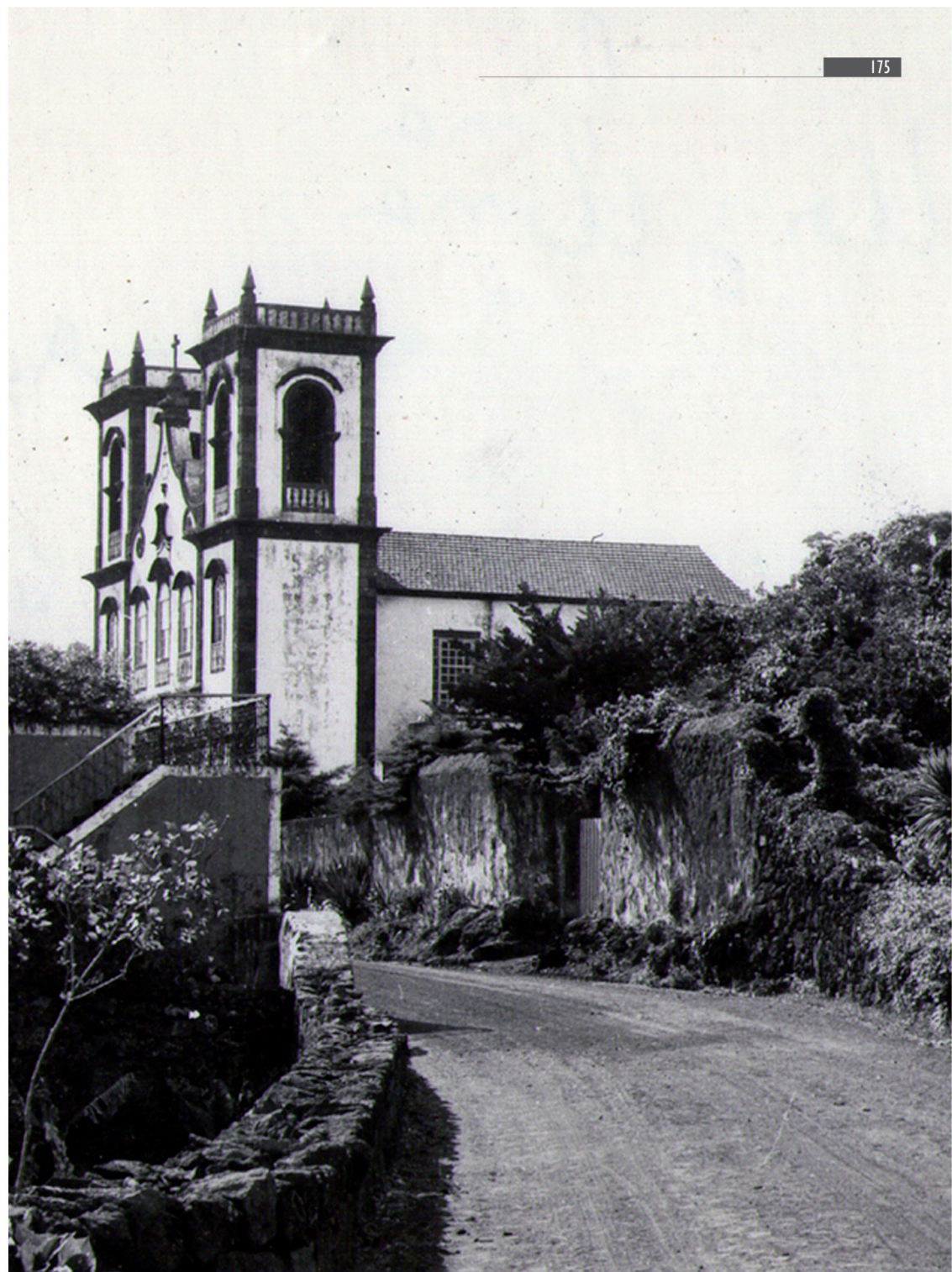
E.R.-2-2º-São Tomé

E.R.-2-2º-Santo Antão

E.R.-2-2º-Santo Antão



A





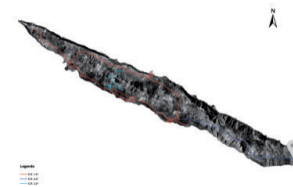
E.R.-1-2ª-Urzelina



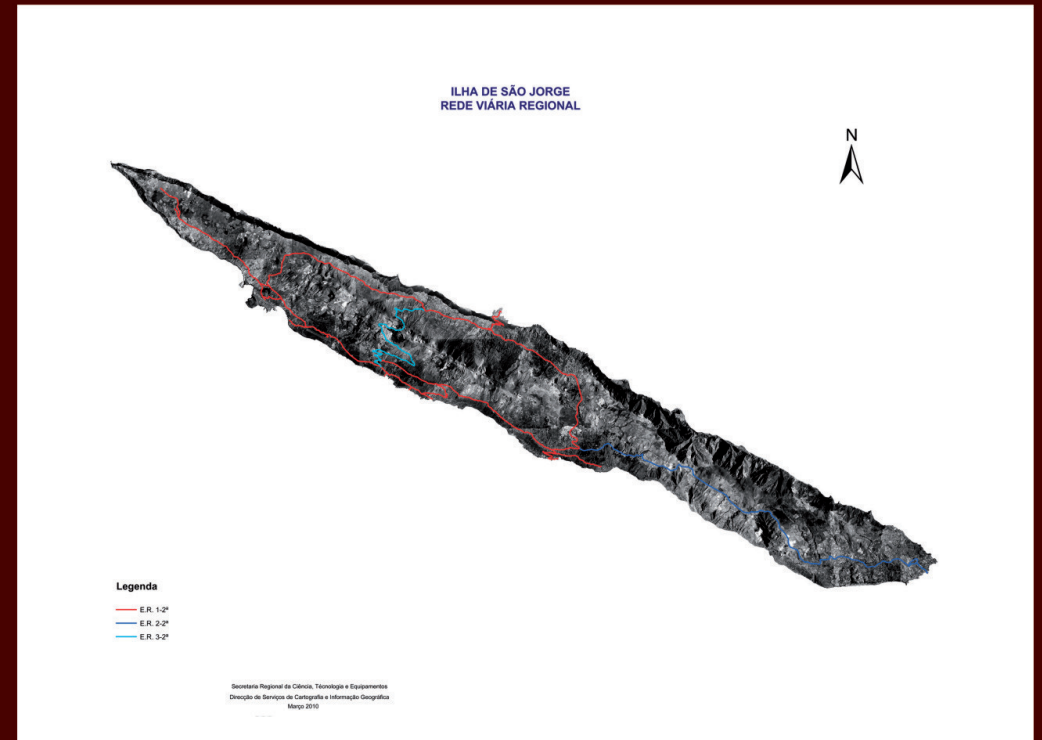
E.R.-1-2ª-Acesso a Velas



E.R.-2-2ª-Topo



E.R.-2-2ª-Topo





2012

MIRADOUROS...

PONTOS DE INTERESSE



Miradouro da Rua de Baixo



Miradouro da Serra do Topo







Miradouro do Canavial



Miradouro do Carregadouro

